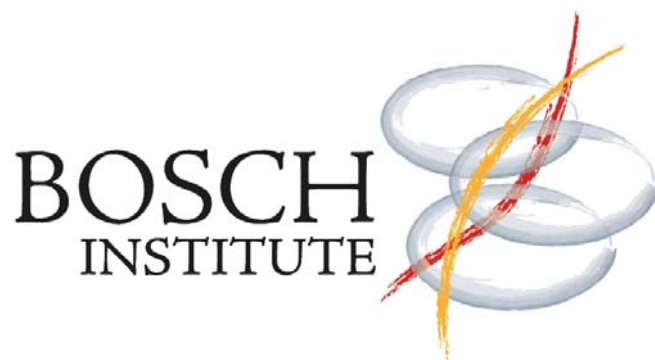


**The Bosch Institute
Brief update
April – December 2006**



Official launch of the Bosch Institute

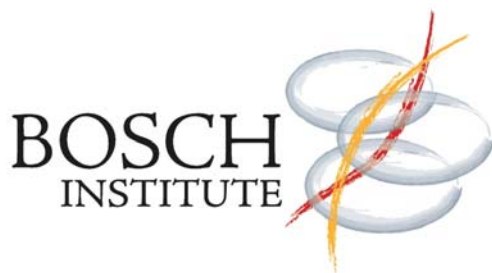
Bosch Incorporated

The Bosch Institute was incorporated on 20 April 2006. This allowed the Institute to commence its operations officially. The Institute is a joint initiative of the University of Sydney and the Sydney South West Area Health Service and both a company limited by guarantee and a public company.

The Bosch currently has more than 60 active research laboratories covering the following five key medical research areas:

- **Organ & Tissue Replacement**
- **Cancer, Cell Biology & Development**
- **Circulation & Respiration**
- **Infection, Immunity and inflammation and**
- **Nervous system, senses & movement**

New Logo



The Bosch Institute is most grateful to Mr Alistair Furnival, Chairman, Strategic Campaign Associates and Director of the Bosch Institute for the pro bono contribution of the logo design and stationery art work.

Strategic's innovative design has a number of interpretations. One is that the three spheres represent the key areas of research namely basic, translational and

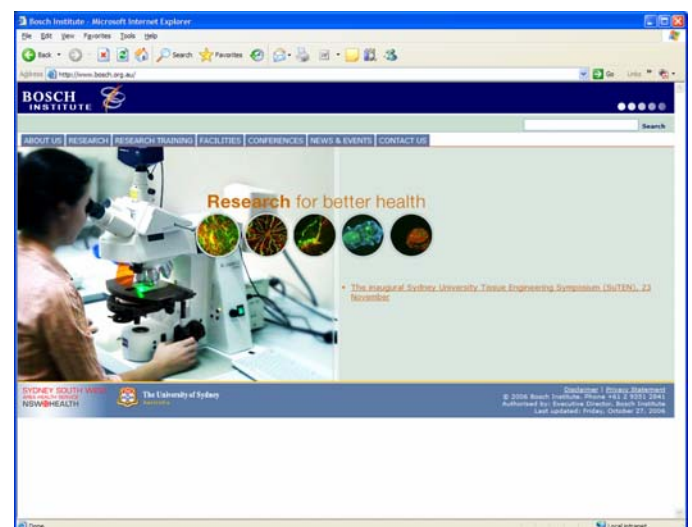
clinical. The arcs link these three together and one of Bosch's main goals is to link the basic researchers with the clinicians to facilitate translational research and bring the results to the patient's bedside.

Bosch Institute website goes live

The all-new website went live on 1 May. Our thanks go to those who worked long and hard on this major task, in particular Vicki Taylor, Joe Pridham, Dane King, Stephen Matulewicz and Louise Wisser.

We hope the website will provide you with a good overview of the range of research activities within the Bosch as well as keep you abreast of key developments and breakthroughs. Your feedback and comments are as always welcome on 9036 3402.

www.bosch.org.au



Bosch Board

The newly formed Board of Directors of the Bosch Institute is:

- ◆ John Stumbles (Chair)
- ◆ David Burke
- ◆ Merlin Crossley
- ◆ Ben Freedman
- ◆ Grant Fulton
- ◆ Alastair Furnival
- ◆ Nick Hunt
- ◆ Michael Jackson
- ◆ Philip Kuchel
- ◆ Chris Murphy
- ◆ Andrew Savage
- ◆ Jonathon Stone
- ◆ Michael Wallace

The Board met for the first time on 24 April 2006. At that meeting Professor Nick Hunt was appointed as Executive Director.

Research Revenue up

One of the goals of the Bosch Institute is to increase research funding through both peer reviewed grant income and other sources of funding such as philanthropy and the less conventional granting bodies and trusts.

The Bosch Institute is delighted to be able to demonstrate a strong growth in peer reviewed grant income (PRGI) over the last 2 years.

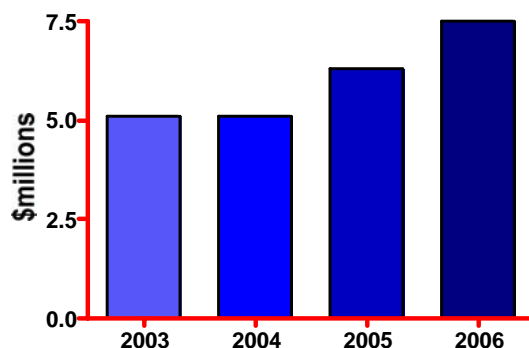


Fig 1. Bosch Peer Reviewed Grant Income 2003 - 2006

Executive Team Appointed

Executive Director

Professor Nicholas Hunt

T: 9036 3242

E: nick.hunt@bosch.org.au

Nick Hunt is a Professor of Pathology, at the University of Sydney. Nicks interests are in biological aspects of free radicals and cytokines. His chief areas of research currently are the immunopathology of infectious disease (especially malaria), and the regulation of inflammatory responses.

Prior to his appointment as Executive Director of the Bosch Institute Nick was the Director of the Institute for Biomedical Research from 2002 – 2006.



Chris Little and Jacquie Stratford at the Tissue Engineering Symposium.

Chief Operating Officer

Jacquie Stratford

T:9036 3402

E:jacquie.stratford@bosch.org.au

Jacquie commenced as Chief Operating Officer, Bosch Institute on October 27. Jacquie's previous role was General Manager of the Melanoma Foundation and Melanoma and Skin Cancer Research Institute. Jacquie has over 20 years experience within the University of Sydney and her career pathway has spanned medical research, student management, senior administration and fundraising.

Executive Officer

Anne Wilson

T: 9036 3338

E: anne.wilson@bosch.org.au

Anne commenced as Executive Officer on October 3. Her most recent position was as South Australia Regional Manager of the Royal Australasian College of Surgeons where she was responsible for the management of the SA office and the provision of executive support to the State Board.

Research Developments

Nature Article

Amyloid at the blood vessel wall

John Hardy & Karen Cullen

An APP gene duplication found in French families with β -amyloidopathy suggests a link between dementia and the vasculature.

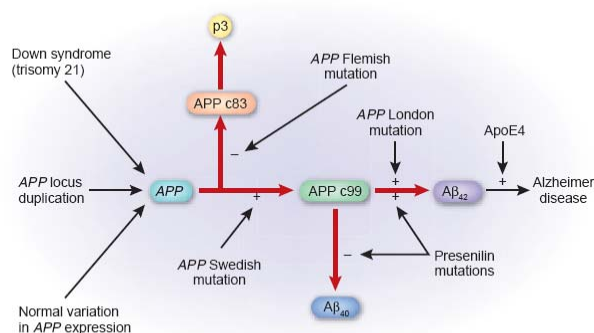


Figure 1 The pathway by which Alzheimer disease pathogenesis is initiated.

Dr Karen Cullen was successful in having her ideas on amyloid at the blood vessel wall and its relationship to Alzheimer disease published in the July 2006 edition of Nature Medicine. A link to this publication is available on the Bosch website, see:

<http://www.bosch.org.au/news/index.php>

Inaugural Tissue Engineering Symposium

On Thursday 23 November 2006 the Faculties of Engineering and Medicine and The Bosch Institute hosted the Inaugural Tissue Engineering Symposium.

National and International speakers gathered to discuss leading edge breakthroughs in areas such as “The use of stem cells to treat heart disease”, “The biology and therapeutic application of mesenchymal precursor cells”, “Nanofibre

scaffolds for Brain and axon regeneration” and “osteoblasts and tissue engineering”.

The day was an overwhelming success with over 100 attendees from across the University of Sydney, The University of NSW and the Bosch Institute.

The day was sponsored by industry partners including:



Symposium organiser Harla Zreiqat was delighted with the response and anticipated this would be the first of many gatherings of the group who were aiming to establish a Tissue Engineering Network.

Professor Judy Black from the Woolcock Institute said “It was pleasing to see the strengths in this pioneering area of research come together from across the Faculties and Institutes”. Professor Black commended the Bosch on the initiative.



Nick Hunt, Stephen Twigg and Harla Zreiqat at the Tissue Engineering Symposium.

NH&MRC Grants Announced

The Bosch Institute congratulates its members on their success in the recently announced NH&MRC funding for 2007:

Research Fellowship renewals:

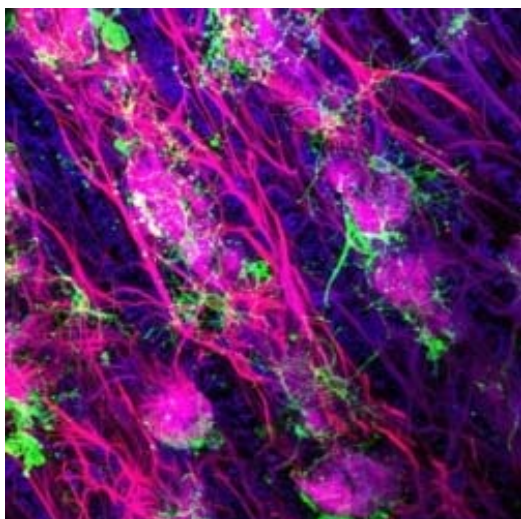
Professor Paul Pilowsky
Professor Des Richardson

New Project Grants:

Associate Professor Tailoi Chan-Ling
Professor Bogdan Dreher
Dr Michelle Gerke
Dr Anne Goodchild
Professor Georges Grau
Dr Kevin Keay
Professor Nicholas King
Dr Frank Lovicu
Professor Paul Pilowsky
Professor Des Richardson
Dr Samuel Solomon
Associate Professor Stephen Twigg
Associate Professor Robert Vandenberg

Bosch Institute research facilities

The Bosch Institute has developed a number of core research facilities. These are well equipped and are managed by professional staff. As well as managing the equipment, these Officers carry out training programs.



Featured image from Richard Sarafian, Retinal Biology Lab.

Advanced microscopy facility

The multi-user microscope facilities of the Bosch Institute cater to all researchers within the Institute by arrangement. Facilities include advanced light and confocal microscopes and the Arcturus laser capture microdissection unit.

Microscopy Officer:

Dr Louise Cole T: 9351 2520
E: louise.cole@bosch.org.au



Molecular biology facility

The Molecular Biology Facility consists of three laboratories. Two of these are located within the Anderson Stuart Building: the main one is Room N232 with additional equipment located in Room W312. A third laboratory will be commissioned later this year to service the needs of Institute staff located in the Blackburn / Bosch / Royal Prince Alfred Hospital triangle. All users of the Bosch Institute molecular biology facility are trained in the use of each piece of equipment they wish to employ in their research.

Molecular Biology Officer

Dr Donna Lai
T: 9351 8787 E: donna.lai@bosch.org.au

Flow cytometry laboratory

This facility has been developed recently as a result of some major grant success by Professor Nicholas King, supported by other Bosch Institute members, and researchers from elsewhere in Sydney.

Molecular Biology Officer

Dr. Sabita Rana
T: 9036 5119 E: sabitar@med.usyd.edu.au